

Customer :

customer

Customer part :

customer part

Comment :

Comment

S1=1.75

S2=2.9

Tmax=466

Tp S2=505.0

PI=0.38

HI=105

Sample =1676.10

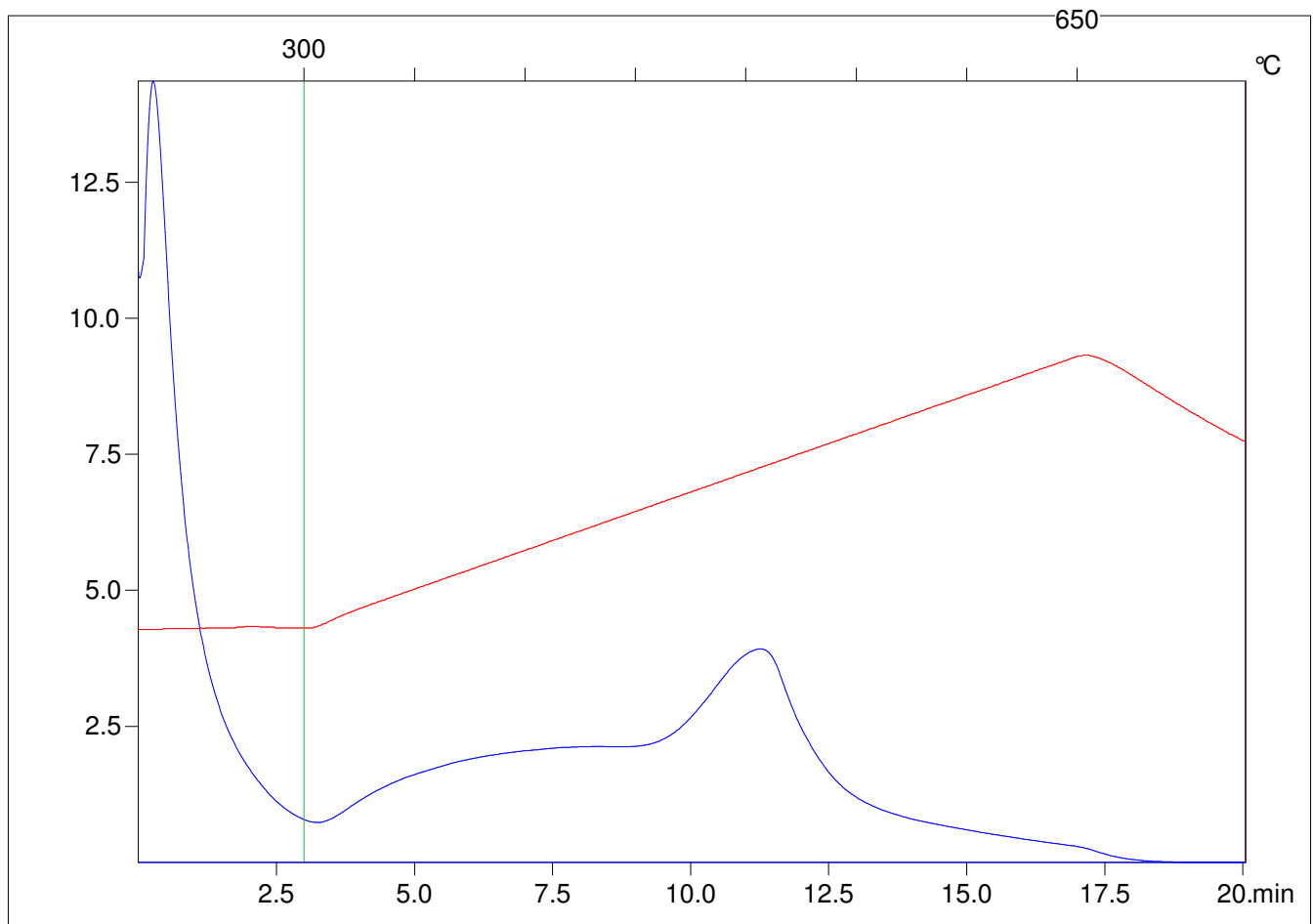
Method =Bulk Rock

Cycle=Basic

KFID(10\*9)=1444

Qty =70.7

TOC=2.77



C:\VINC\PK1\_1792\PK025.R00 : FID pyrolysis graphic

State

Pyro Status

Oxi Status